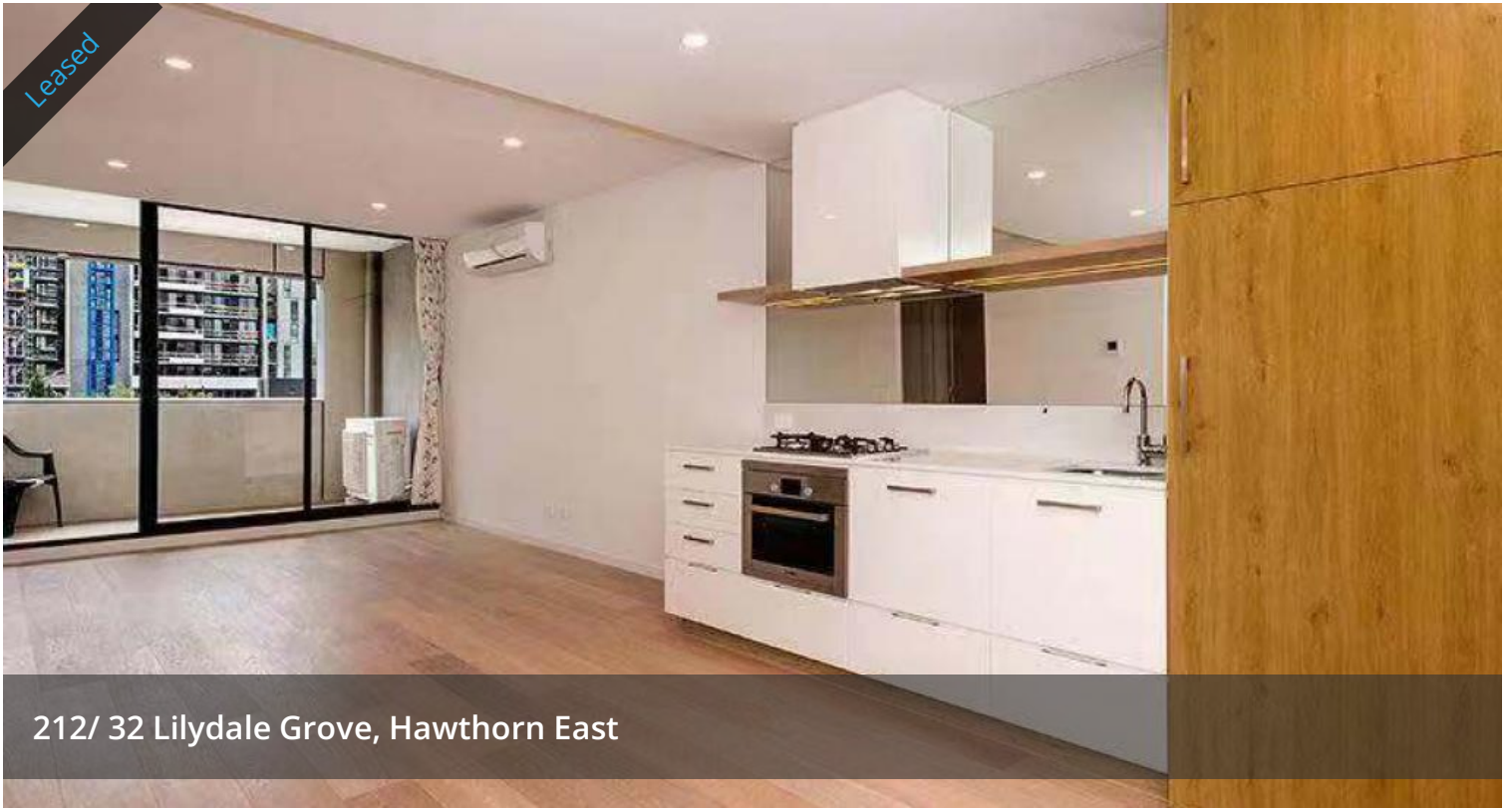


Leased



212/ 32 Lilydale Grove, Hawthorn East



Start Your New Tenancy From Hawthorn

Positioned to thrill in charming Auburn Village, right amidst the buzz and excitement of award-winning dining and boutique shopping this stunning apartment is a sensational choice for those looking for a stylish place to call home. This 2 bedroom apartment delivers some serious impact with chic timber flooring and leafy outlooks, accentuating sophisticated space and sunlight throughout. A peaceful haven at the rear featuring Bosch / stone kitchen/living areas open to an undercover entertainment balcony, immaculate bathroom, good mirrored BIR's, contemporary fixtures, double glazing, split system heating & air conditioning, European laundry, block out blinds, video intercom, secure basement parking, storage cage, communal bike storage and visitor parking. This impressive apartment boasts amazing access to Glenferrie Road shopping precinct, Camberwell shopping precinct, Swinburne University and is moment's walk from Auburn train station.

- Two good size bedrooms with BIRs
- Sparkling bathroom
- Walking distance to Auburn Train Station
- Walking distance to Swinburne University Hawthorn Campus
- Proximity to the shopping precinct and Camberwell Junction

Book an inspection is easy! Please click "Book an Inspection Time", "Request an Inspection" or "Email Agent" to book an inspection, you will receive an instant SMS/Email regarding your booking or request. In this

🛏 2 🏠 1

Price	\$380 Per Week
Property Type	Rental
Property ID	65

Agent Details

Danny Zhang - 0420 770 314
James Ollaik - 0499 799 771

Office Details

Diamond Property Management
03 9813 1863



way, you will not miss any inspections, price changes and similar properties that may be suitable for you. We assure you that your details remain confidential and are only used for the purpose of securing your property. Alternatively, feel free to call 0499799771 for more information. Please check your inbox/spam mailbox for booking confirmation.

"PHOTO ID MAY BE REQUIRED AT ALL INSPECTIONS.

PLEASE NOTE: Open for Inspection Times and Property Availability is subject to change or cancellation without notice;

Photos and videos are for advertising purposes only; We try to use the most accurate photos of the property. However, the photos may differ from the actual condition of the property. We strongly recommend you join the inspection to confirm the condition of the property. Please make sure you have agreed on the property's current condition before you apply.

The above information provided has been furnished to us by the vendor/s. We have not verified whether or not that information is accurate and do not have any belief in one way or the other in its accuracy. We do not accept any responsibility to any person for its accuracy and do no more than pass it on. All interested parties should make and rely upon their own inquiries in order to determine whether or not this information is in fact accurate.