

Leased



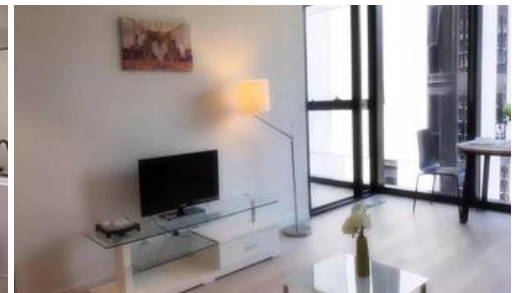
1401/ 135 A'beckett Street, Melbourne

Inspect By Appointment

Private inspections are available for all of our properties.

Contact the agent to make an appointment.

DIAMOND PROPERTY



FURNISHED EQ TOWER RESIDENCE IN THE HEART OF CBD

EQ Tower features an impressive array of communal amenities including a 25-metre outdoor swimming pool and BBQ area, indoor gym, sauna, spa, private dining rooms, karaoke suites, cinema, games room and lounges. Designed by architects Elenberg Fraser, the curtain wall glass facade was designed using a parametric equation which analysed weather patterns, sunlight, views and apartment usage to ensure natural light is delivered to all living and bedroom spaces.

With the walking distance to RMIT University/University of Melbourne, students are welcome to apply for this tenancy. Put the address on the map, you will find out the best of Melbourne CBD is within a short stroll from this iconic location (Shops, restaurants, cafes, entertainment, public transports and so much more).

This furnished apartment features:

- Open plan living and dining area with sofa, coffee table, dining table and chairs
- Modern kitchen with a dedicated kitchen island bench equipped with

1 1

Price \$360 Per Week
Property Type rental
Property ID 192

Agent Details

Danny Zhang - 0420 770 314
James Ollaik - 0499 799 771

Office Details

Diamond Property Management
03 9813 1863



The above information provided has been furnished to us by the vendor/s. We have not verified whether or not that information is accurate and do not have any belief in one way or the other in its accuracy. We do not accept any responsibility to any person for its accuracy and do no more than pass it on. All interested parties should make and rely upon their own inquiries in order to determine whether or not this information is in fact accurate.